



**TOPSCIENCE 众山**



# Full Spectrum Sodium Hyaluronate

Material Submission Code:  
006722-00507-9284

## SHANDONG TOPSCIENCE BIOTECH CO., LTD.

Address: #98 Lanshan West Road, Lanshan District,  
Rizhao, Shandong, China

Tel: +86-532-80821298

E-mail: sales@topscience.cn

Website: www.topscience.cn

## QINGDAO TRONGEN BIOTECH CO., LTD.

Address: #330 Songling Road, Laoshan District,  
Qingdao, Shandong, China

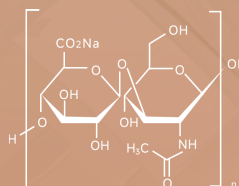
Tel: +86-532-80821298

E-mail: sales@trongenbio.com

Website: www.topscience.cn



**INCI NAME: SODIUM HYALURONATE**  
**MOLECULAR FORMULA: (C<sub>14</sub>H<sub>20</sub>NNAO<sub>11</sub>)<sub>n</sub>**  
**RECOMMENDED DOSAGE: <1%**



## PRODUCT ADVANTAGE



Firming and anti-wrinkle



Moisturizing and repairing

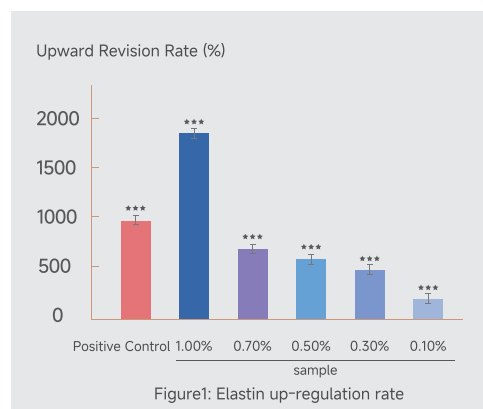


Improving skin smoothness

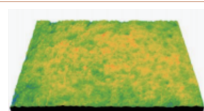


## PRODUCT SPECIFICATION

Items	Specifications	Methods
Character	White or almost white powder	Visualization
Identification Infrared absorption	Complies with the Ph.Eur.reference spectrum of Sodium Hyaluronate	Ph.Eur.(2.2.24)
pH	6.0~8.0 (0.1% solution)	ChP 0631
Light transmittance	≥ 99.0%	ChP 0401
Intrinsic viscosity	Report the test value	Ph.Eur.
Molecular weight	Report the calculated value	Ph.Eur., JP
Protein	≤ 0.3% (on the dried substance)	Ph.Eur.
Loss on drying	≤ 10.0%	ChP 0831
Assay	95%~105% (on the dried substance)	Ph.Eur.
Elastin	≥ 11.00ng/mL	NIT/NMD/SOP(TW)-005 CN 114292894 A
Total aerobic microbial count	≤ 100 cfu/g	ChP 1105
Total combined yeasts/mould count	≤ 20 cfu/g	



Under the conditions of this test, the test results of this sample are significantly different from the negative control group, indicating that the sample can promote elastin synthesis in this concentration range, indicating that the product has firming and anti-wrinkle effects.



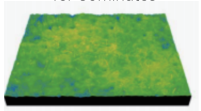
Before use



After using the product for 30minutes



After using the product for 2 hours



After using the product for 4 hours

Figure 2: Effective cases of skin smoothness improvement in group of subjects (subject No. :10)

Under the test conditions, the test area samples showed moisturizing effects after 30 minutes, 2 hours and 4 hours of use.

Under the test conditions, the test area samples showed repairing effects after 30 minutes, 2 hours and 4 hours of use.

Under the test conditions, the test area samples showed firming effects after 30 minutes, 2 hours and 4 hours of use.

Under the test conditions, the test area sample showed improved smoothness effects after 4 hours of use.

Under the test conditions, the test area samples showed anti-wrinkle effects after 30 minutes, 2 hours and 4 hours of use.



## APPLICATION

Can be widely used in cosmetics such as lotions, facial masks, essences, etc.



## PACKAGE AND STORAGE

1. Pharmaceutical low-density polyethylene (LDPE) bag with outer aluminum foil bag or customized package.
2. 100g/bag, 1kg/bag, or customized package.
3. In an airtight container, protected from light and humidity, 2-8°C.